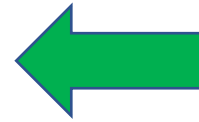




keymaster.pl/home/download/

1. [Drivers Instalation](#)
2. [Server access](#)
3. [Firmware Update](#)
4. [BCM2 Locked NEC reading](#)
5. [Dealer key preparing](#)
6. [Key Learning](#)
7. [Synchro Data \(A6,A7,A8\)](#)
8. [Diagrams](#)



Click to selected contents

Do not use a USB HUB!

For our device to work properly, you need to have 2 separate USB ports on your computer.



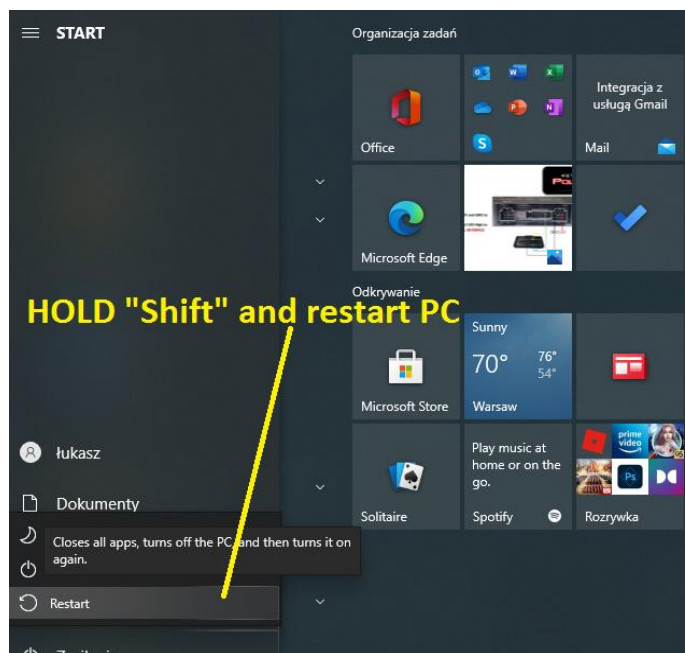
DRIVERS INSTALATION (WINDOWS 10 and 11)



Our device drivers are the **same** for all WINDOWS versions.
However, **for WINDOWS 10 and 11**, a
special installation procedure is required!!

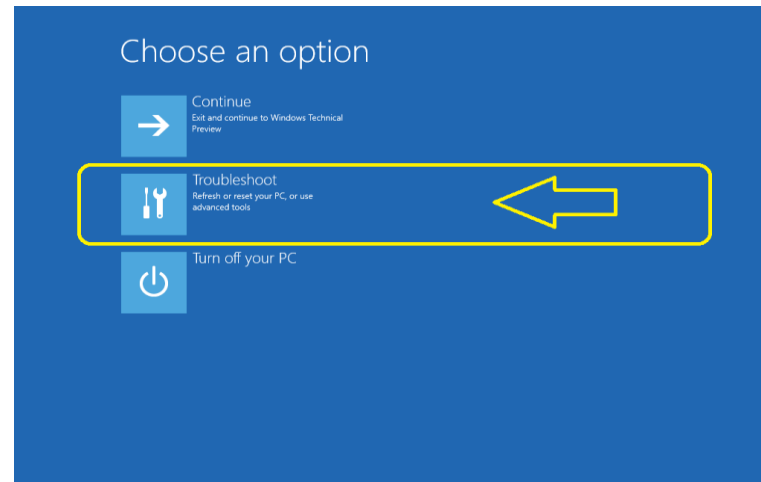
Please follow the steps below to install the drivers correctly.

1. Press and hold down the "**SHIFT**" key
2. Perform a restart while still holding "**SHIFT**"

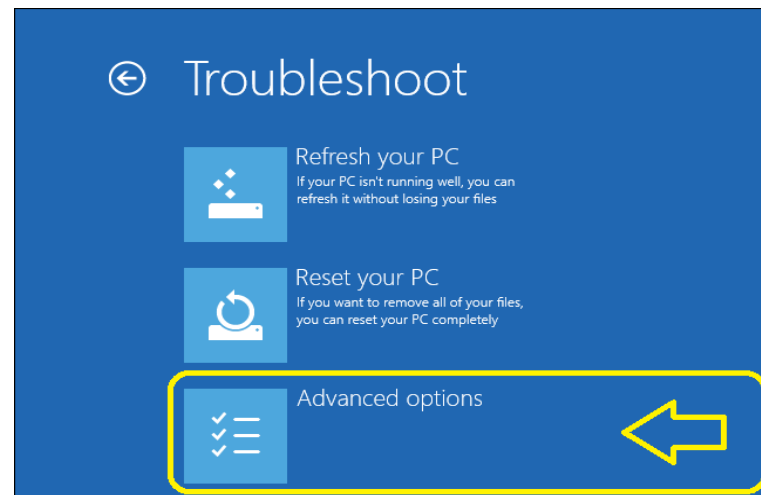


3. You will see a window during the reboot.

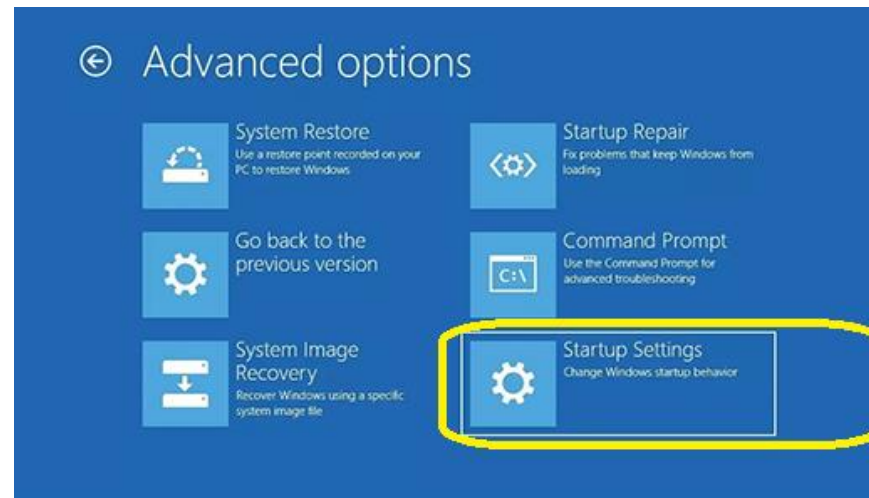
Select : Troubleshoot



and then: Advanced Options



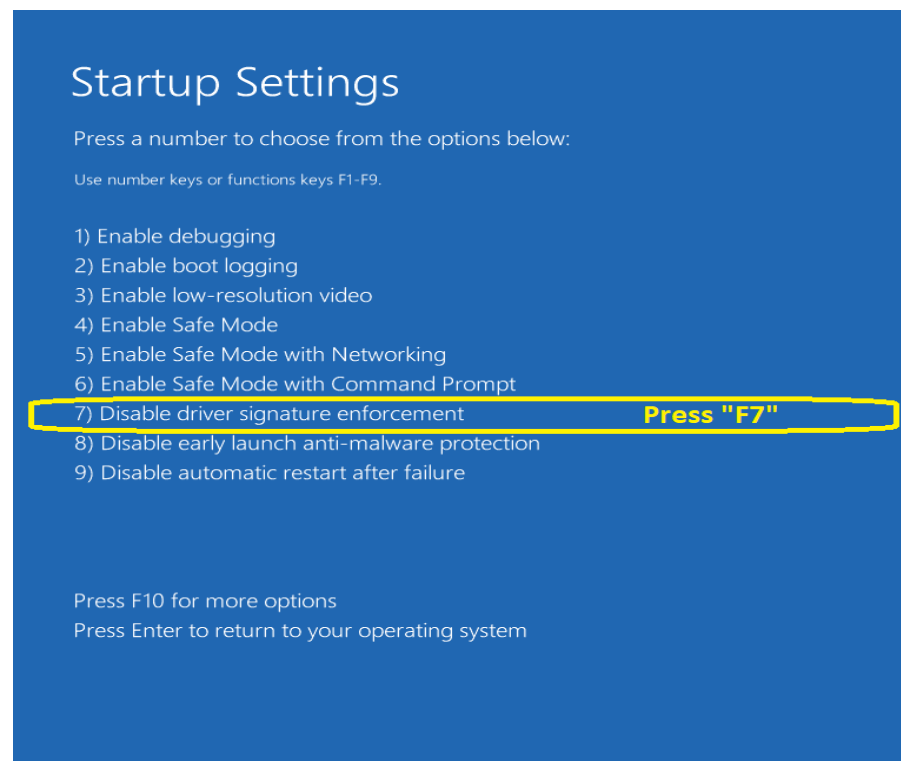
Now select: Startup settings



And : Restart



Press „F7” (**Disable Driver Signature Enforcement**)



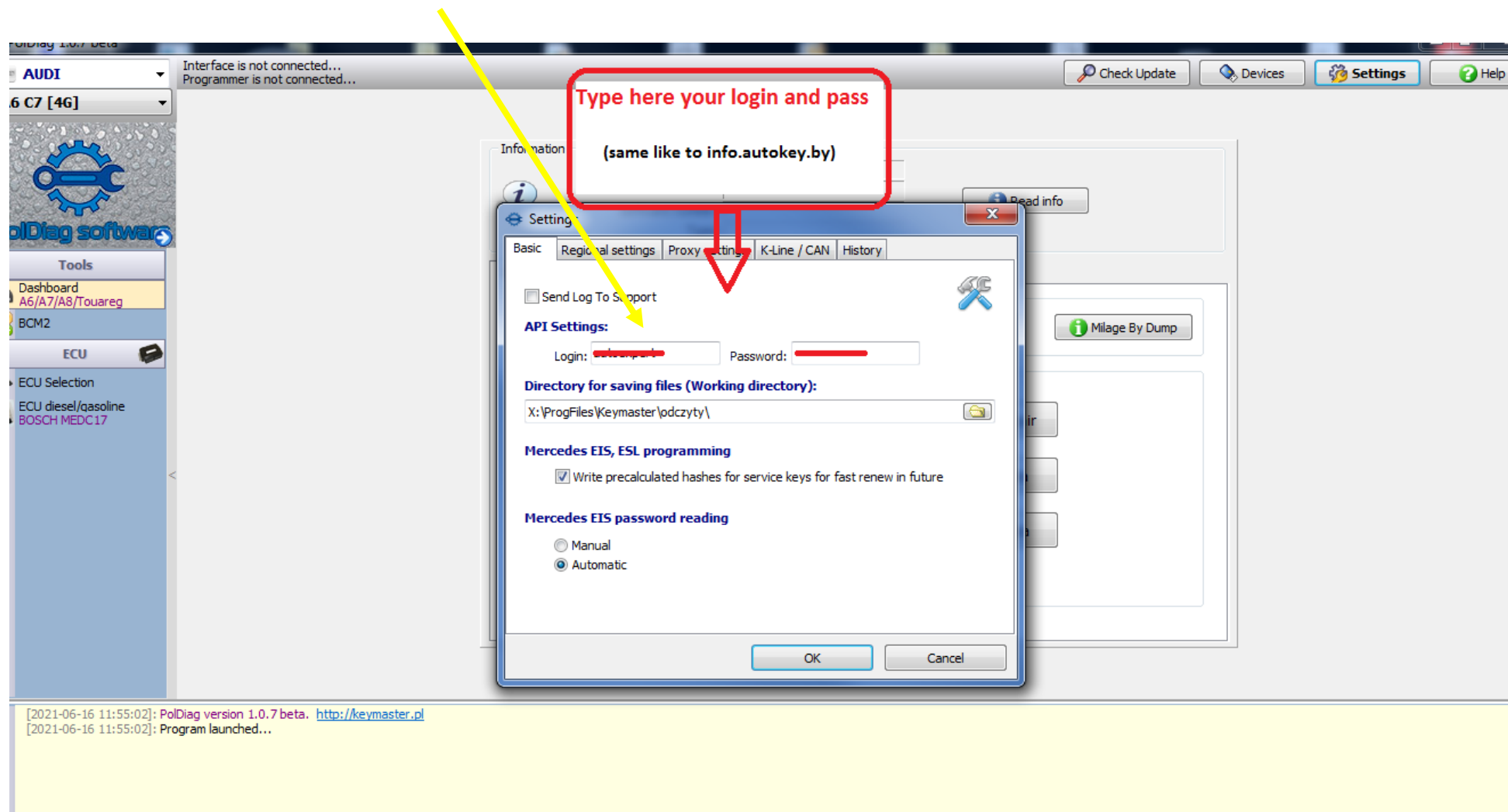
Now, after booting the system, connect the Keymaster PolDiag devices to the USB ports.

Go to Windows “**DEVICE MENER**GER” and install the drivers, indicate the location where you saved the downloaded file.

Note the drivers for WIN7 and WIN10 are the same.

To access our server, please go to our website info.autokey.by and register by entering your email address and serial number of the device.

The obtained login and password should be entered in the program's settings.

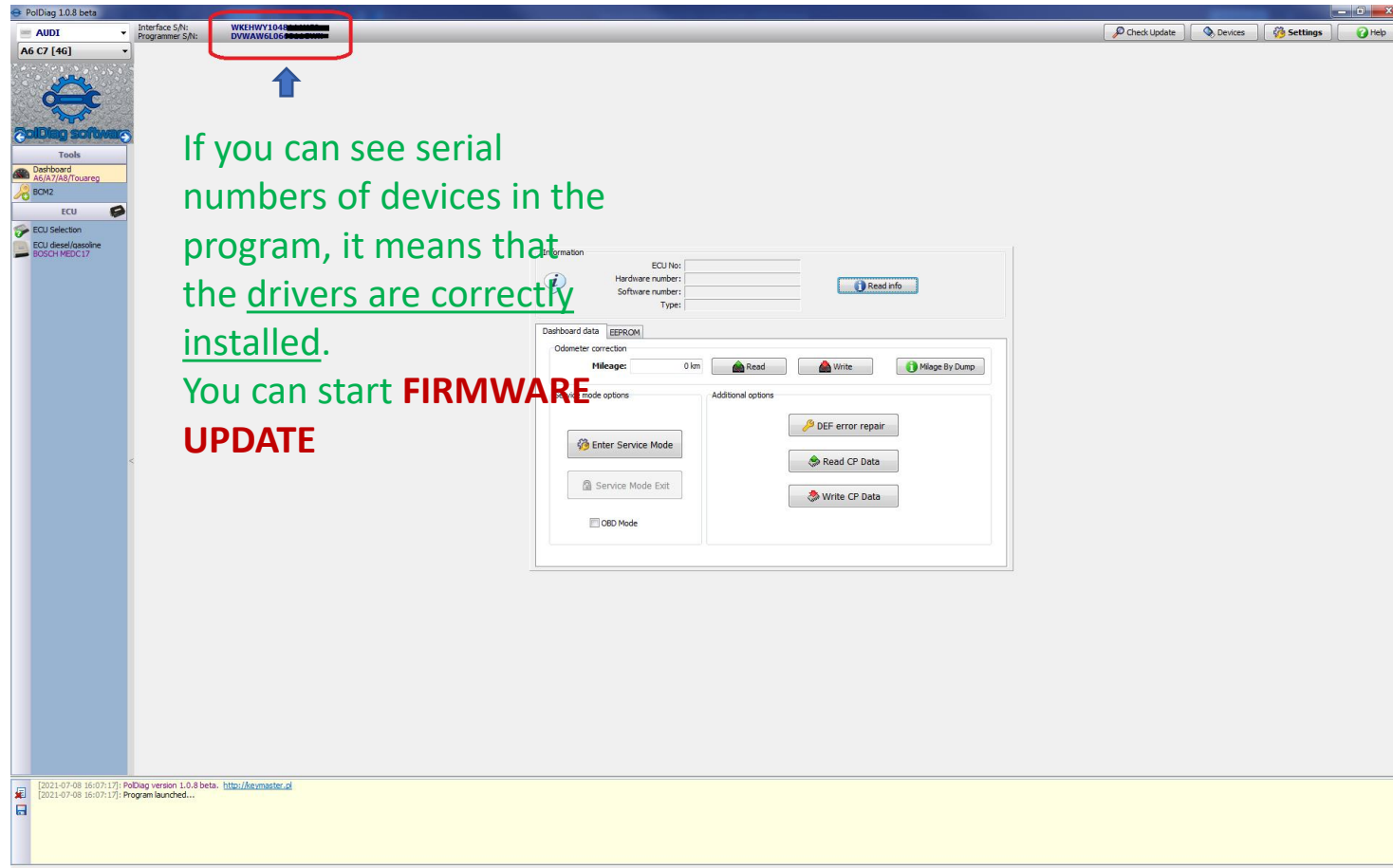


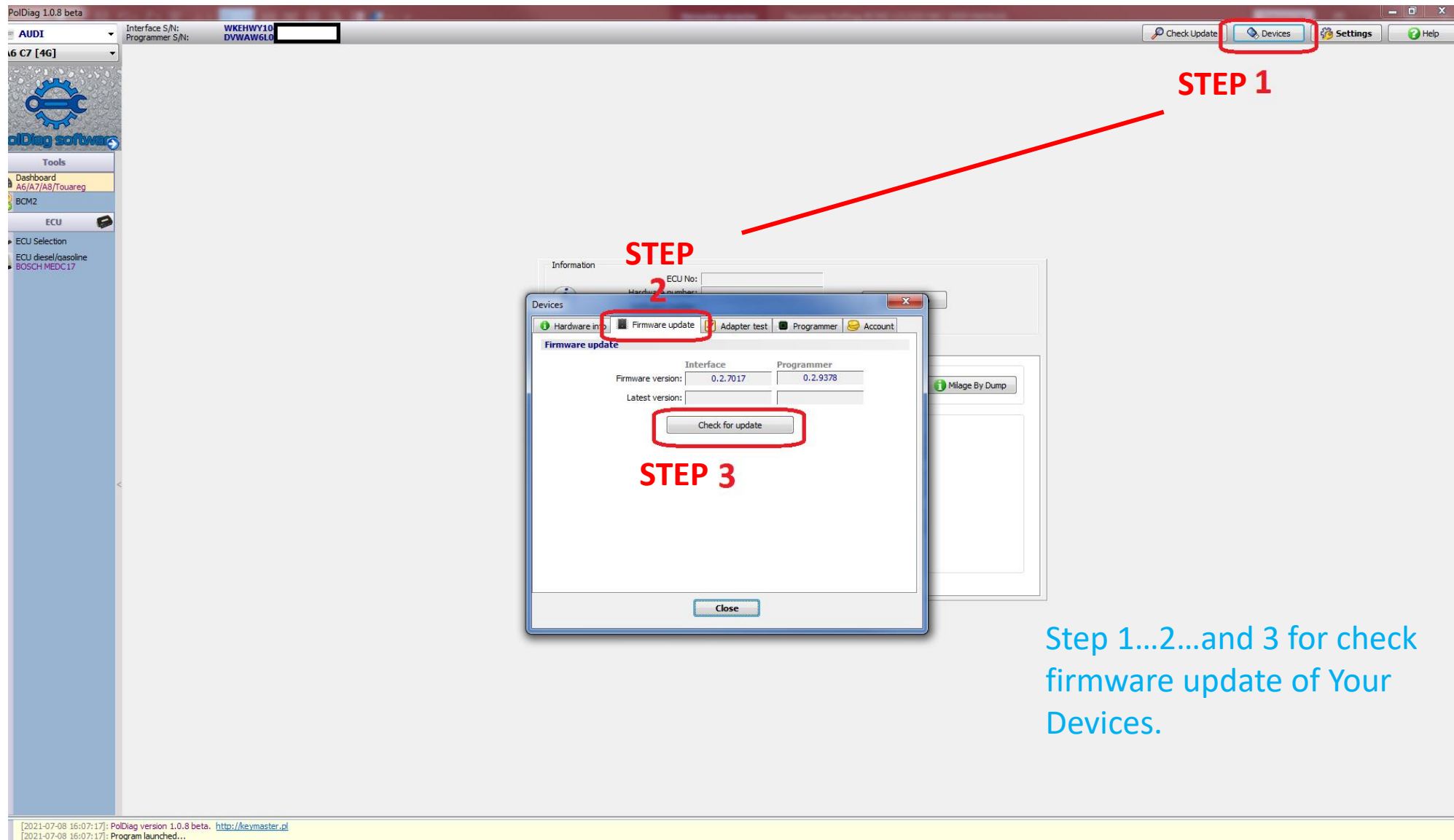
DONE. You can use Keymaster PolDiag soft.

3. Firmware update.

Once the **drivers are installed** and you can see the **serial numbers** of the devices at the **top** of the program

Now you should check **update the firmware**.





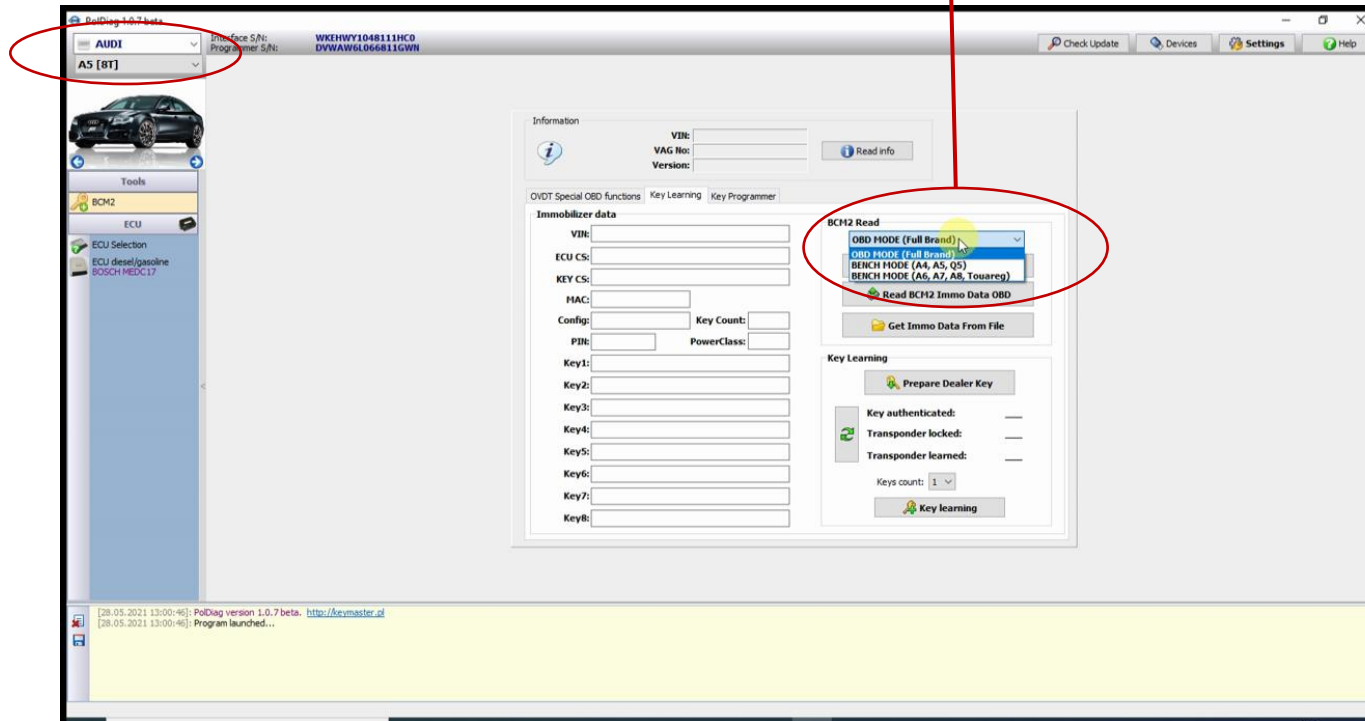
Step 1...2...and 3 for check firmware update of Your Devices.

Check the availability of firmware for your devices every time we update the main program.

4. BCM2 Locked NEC Reading.

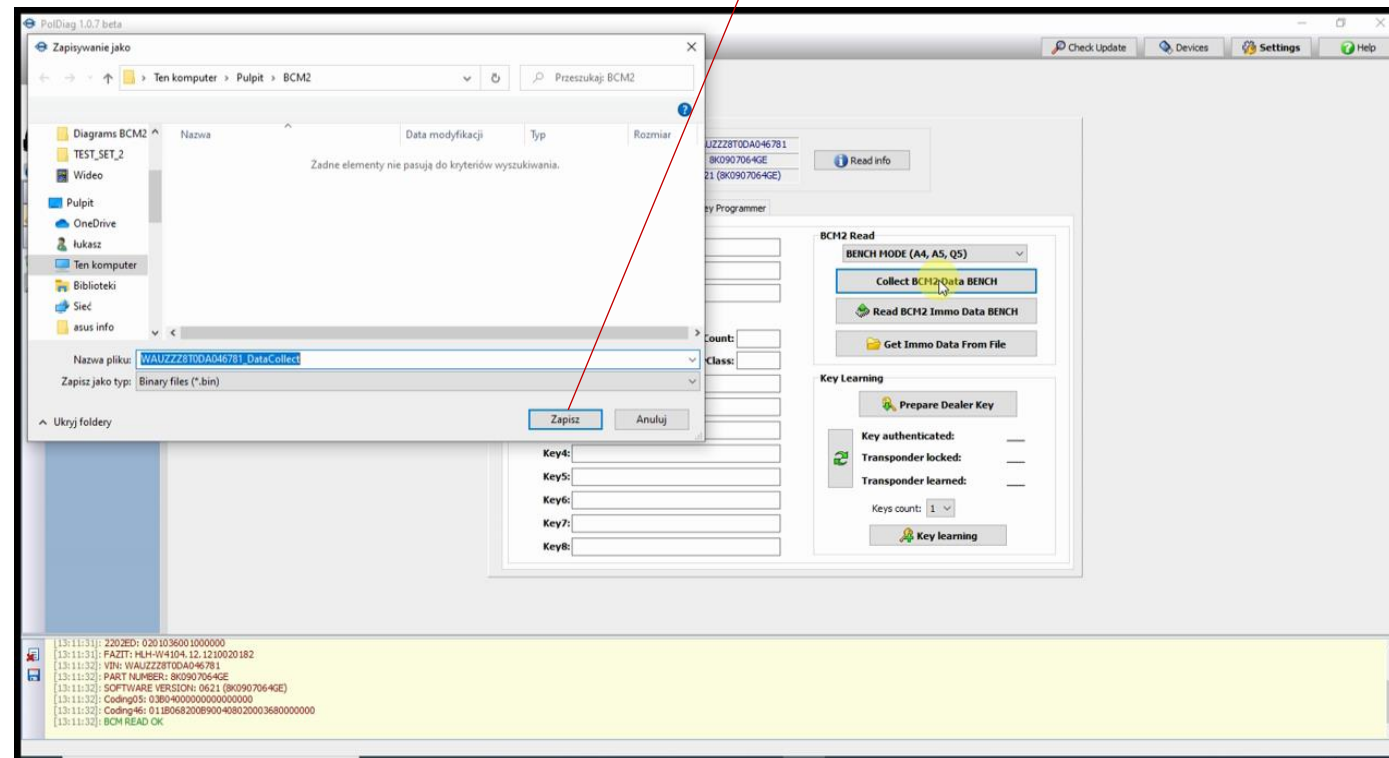
Connect the **adapter cable wires** as shown in the [diagram](#) or [diagram for NEC 3635 & NEC 3382](#)
Connect the power and [CAN HIGH and CAN LOW](#).

Go to the CAR MODEL-> BCM2 section→KEY Learning
Now select connection type as “ **BENCH MODE**”

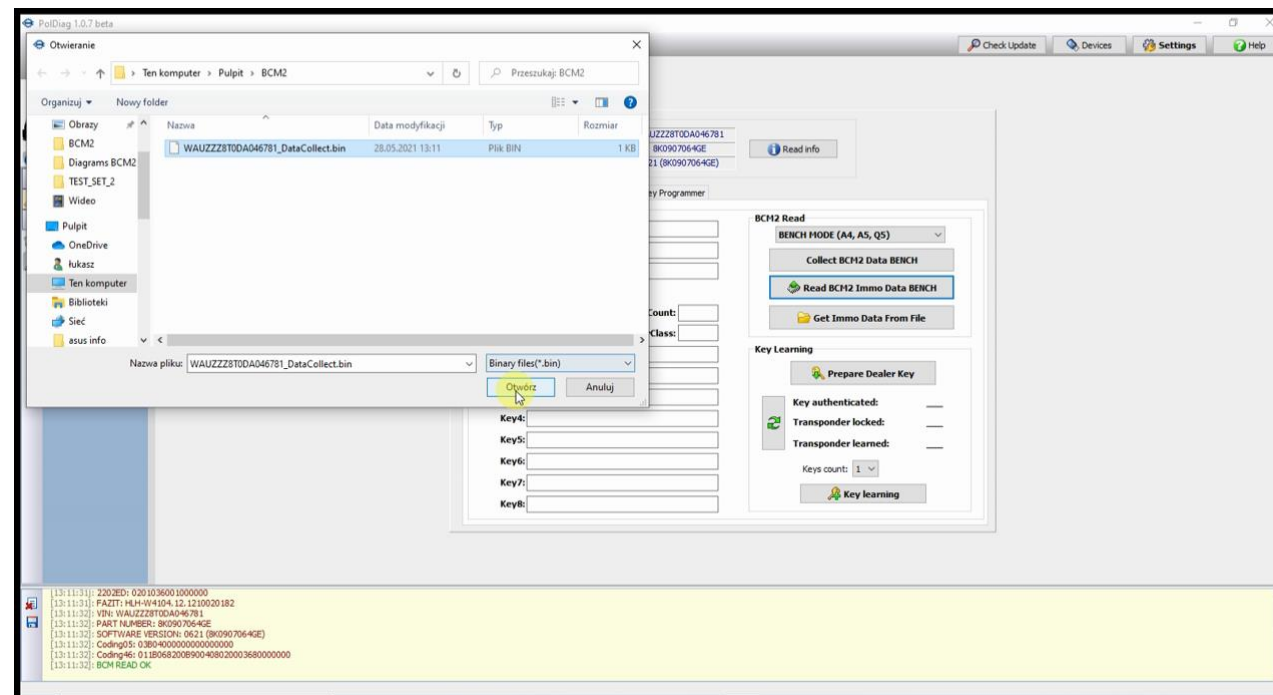


and click “Collect BCM2 DATA BENCH”

After a few seconds, the software will ask you to select where to save the **special file**-> select location and click “save”

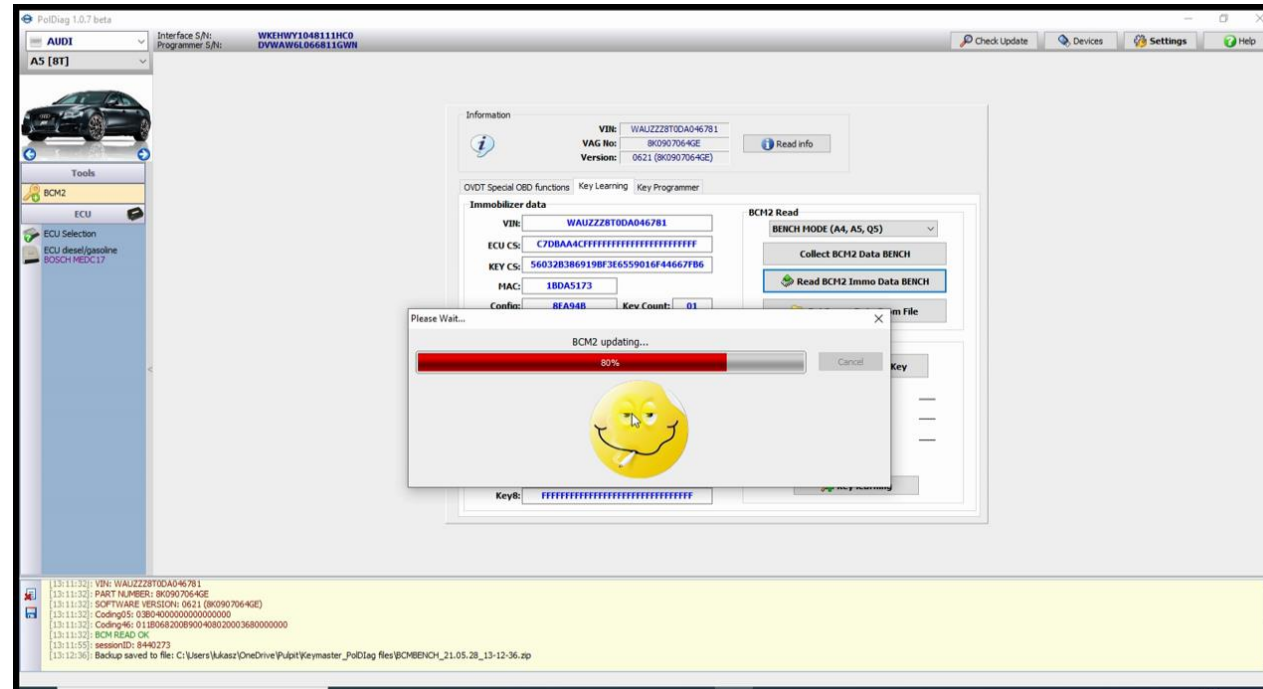


Next click **“Read BCM2 immo data BENCH”**->
and chose file saved in previous step.



Now the software will start **BCM2 preparation** and then the **immo data extracting**.
At this point, it will display **CS, VIN, MAC, number of saved keys** and all necessary data.

NOTE- Do not perform any activities until this process is completed!!



After completing this step disconnect the wires from the BCM2 and fit it back to the car.

Now you can either make the **dealer key**.

No need save file for future

ALL data are saved on ur server for future use.

Important information

If you want to make **DEALER KEY** in the **future**,
You don't need to reread bcm2 in bench mode.
Just connect our **OBD INTERFACE** to the car's OBD
and select **Prepare Dealer key**

The software will **recognize the car and then ask whether to display the data found on the server.**

Select **"Yes"** to see immo data that was saved on ur server.
Now You can prepare and learn the next Dealer Key.

5. DEALER KEY PREPARING

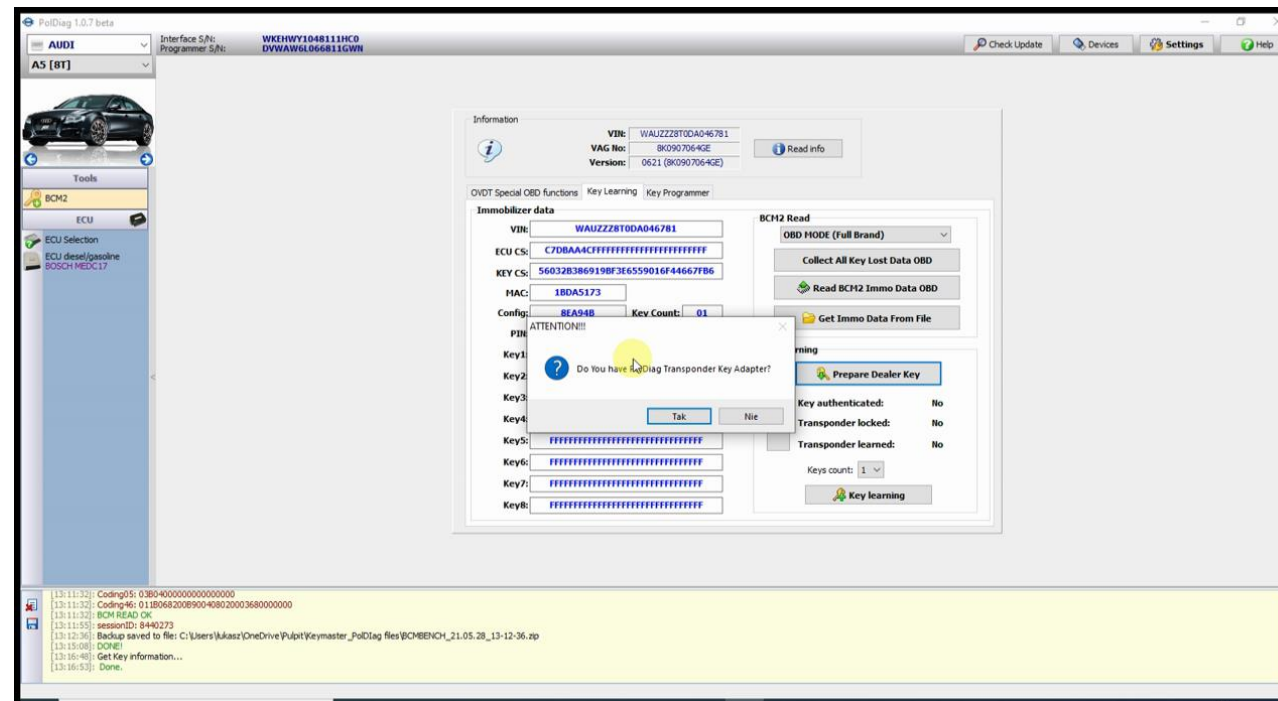
Connect the **KEY ADAPTER** to the PolDiag programmer.

Press “**Prepare Dealer Key**”

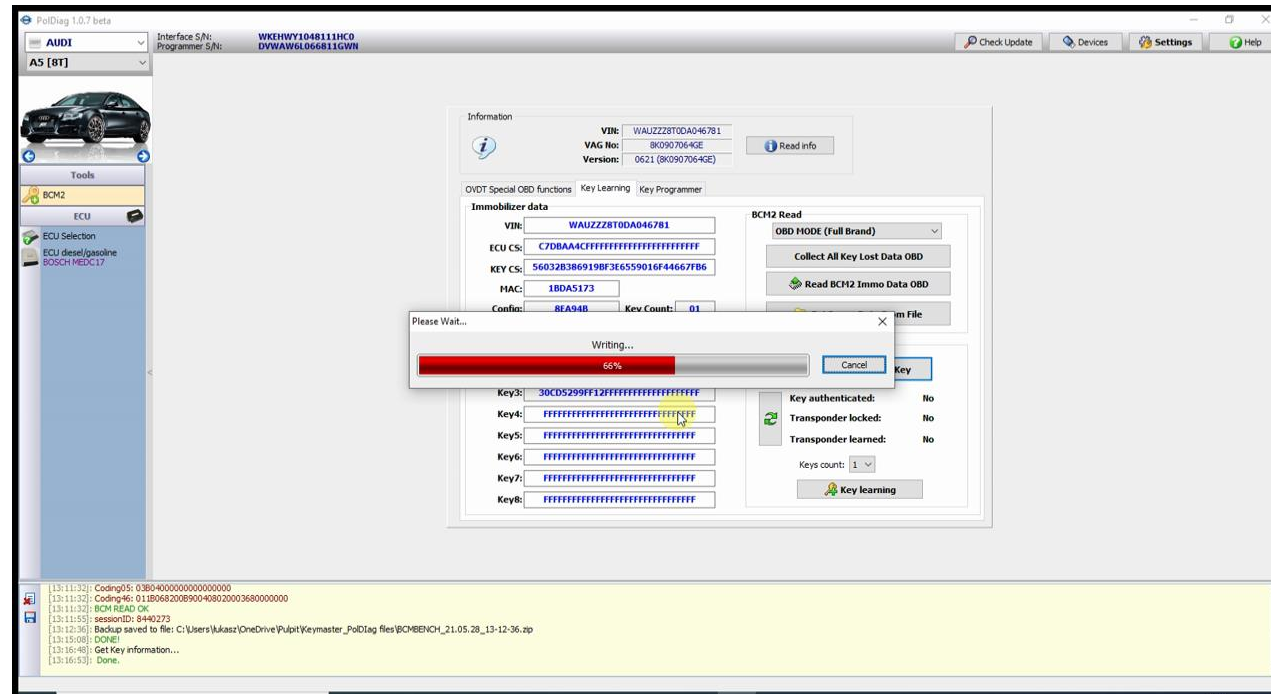
-> **Insert** new or renewed key to **KEY ADAPTER** and press “**OK**”

For A6, A7, A8 Touareg, the software must determine the key preparation method.

Answer **yes / no** to the questions that arise.



The software after check key will save the **nessesary data** in the key and **confirm the end of the process**.



Done.
Dealer Key is ready.

www.info.autokey.by
www.keymaster.pl

6. KEY LEARNING STEPS.

Connect **Keymaster PolDiag OBD INTERFACE** to Car OBD.

Go to the **CAR MODEL-> BCM2** section → **KEY Learning**

Insert the prepared key into the ignition switch*, choose the number of keys you want learn (In our example 1) and select **"KEY LEARNING"**

Confirm that key is in IGNITION.

The software will **ask** if the dashboard **display shows L1 / 1?** (In our example we learn 1 key)

If so click **"OK"** and wait to end process confirmation.

DONE.

KEY IS READY TO START CAR.

* The Audi A6 A7 A8 does not have an ignition switch.

In this case, keep the key in the place indicated below during the procedure.



7. Synchro Data (Audi A6,A7,A8,Touareg)

1 CLICK SYNCHRO DATA

www.KEYMASTER.pl



**AUDI A6,A7,A8
2011- 2018
ALL KEY LOST**



IMPORTANT !!!! Audi A6, A7, A8,Touareg

Need additional data during preparation „dealer key” called „sync data”

This data is not stored in the BCM2.

Our company is the first and only one in the world to offer the possibility of downloading this data automatically from our server.

How to get sync data for Audi A6,A7,A8,Touareg?

Very Easy with Keymaster PolDiag 😊

Read Immo data from BCM2 with **our device in bench mode**.

Click **“Key Synchro Data”** and **„BCM2 Read Only”**

Then **„Order sync data”** you will be redirected to the ur store - [SYNC DATA for A6,A7,A8 - Keymaster](#)

where you should make the **payment** (120EUR) by specifying the **VIN** of the car for which you need **“sync data”**.

After about **30 – 60 minutes** you can execute **preparing dealer key with ur device ...**

The server will **automatically find** the data you ordered and prepare the dealer key with necessary data.

Last step is **KEY LEARNING** direct in CAR

DONE.

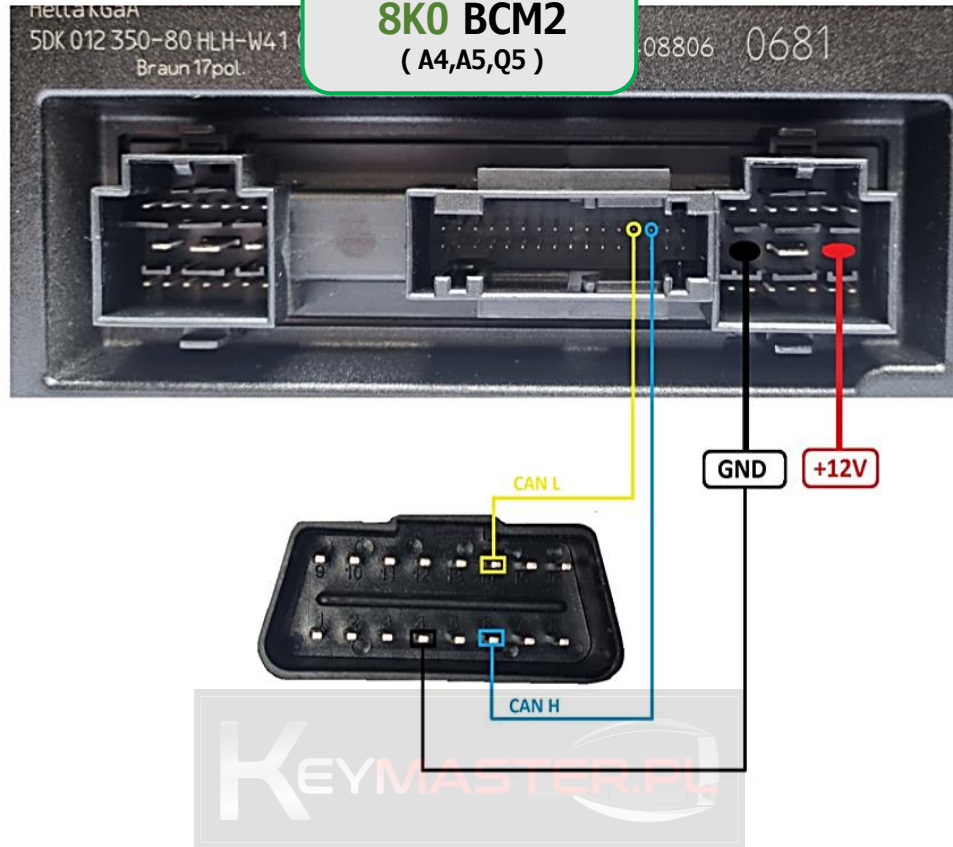
www.keymaster.pl

www.info.autokey.by

DIAGRAMS

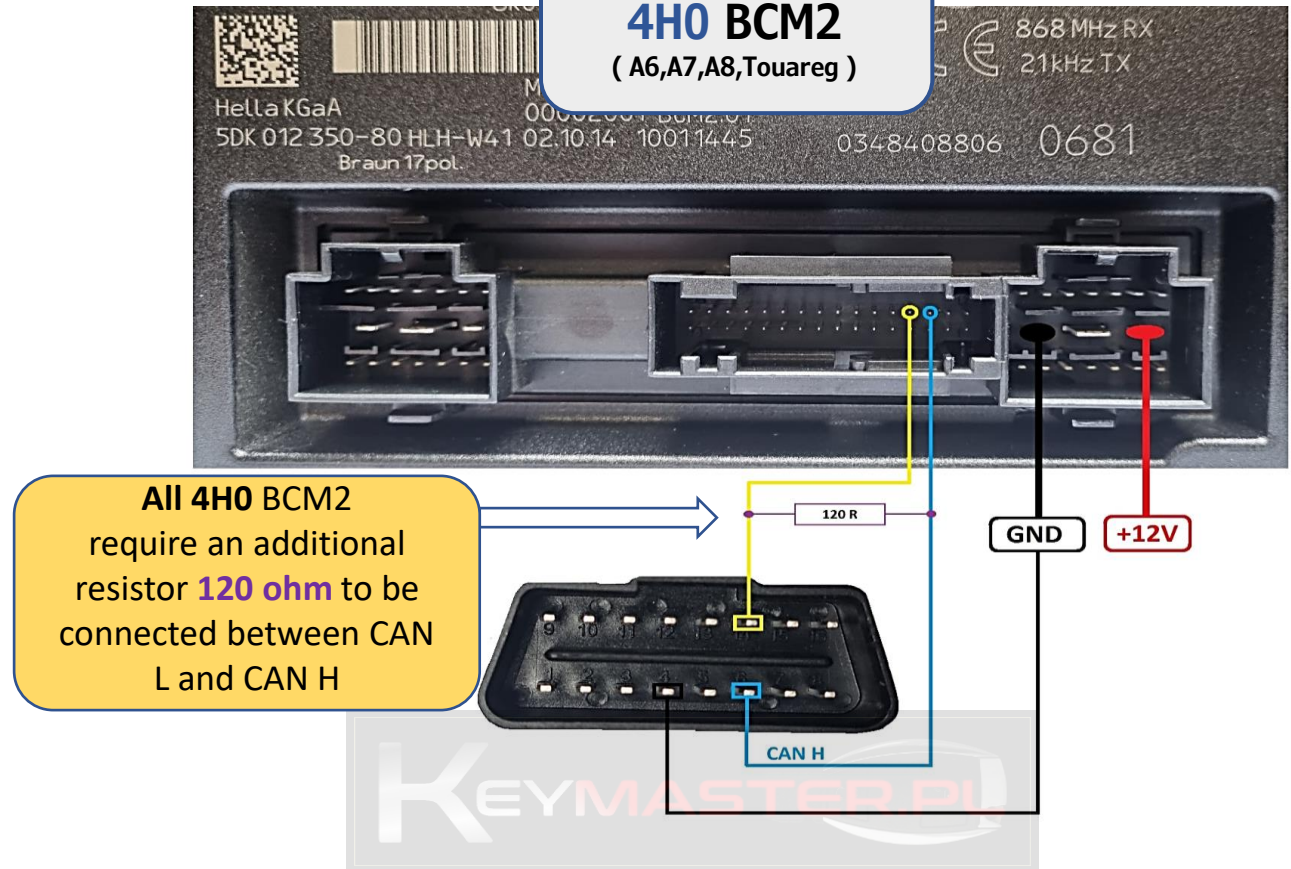
STEP 1 for
8K0

ALL
8K0 BCM2
(A4,A5,Q5)



STEP 1 for
4H0

ALL
4H0 BCM2
(A6,A7,A8,Touareg)

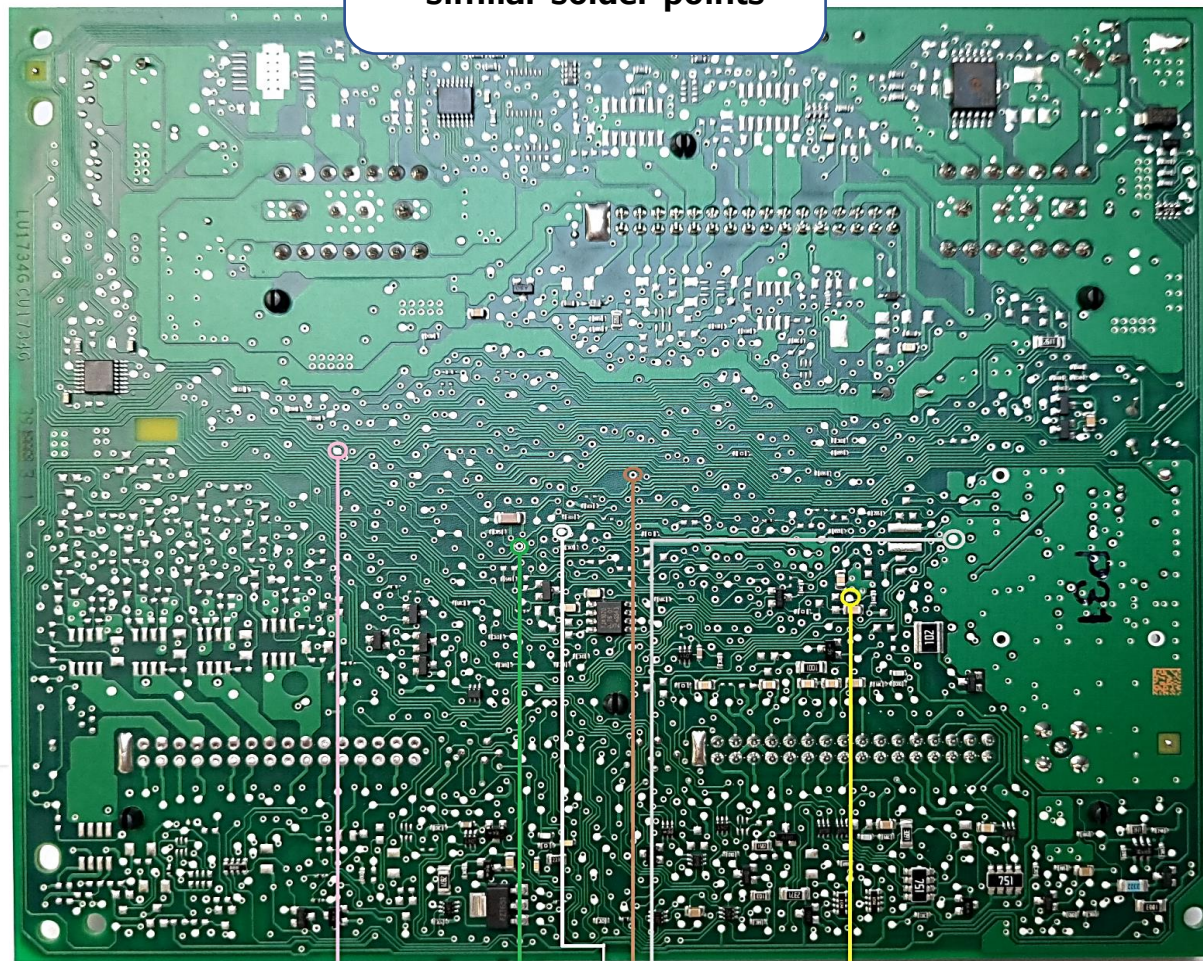


STEP 2

ALL BCM2 8K0 and 4H0
with corresponding/
similar solder points

WIRES DESCRIPTION

VCC
PDX (FLMD0)
RXD (white)
TXD
RST (Reset)
GND



IMPORTANT !!

This diode should be
installed **ONLY** if
you build the adapter
yourself !!!



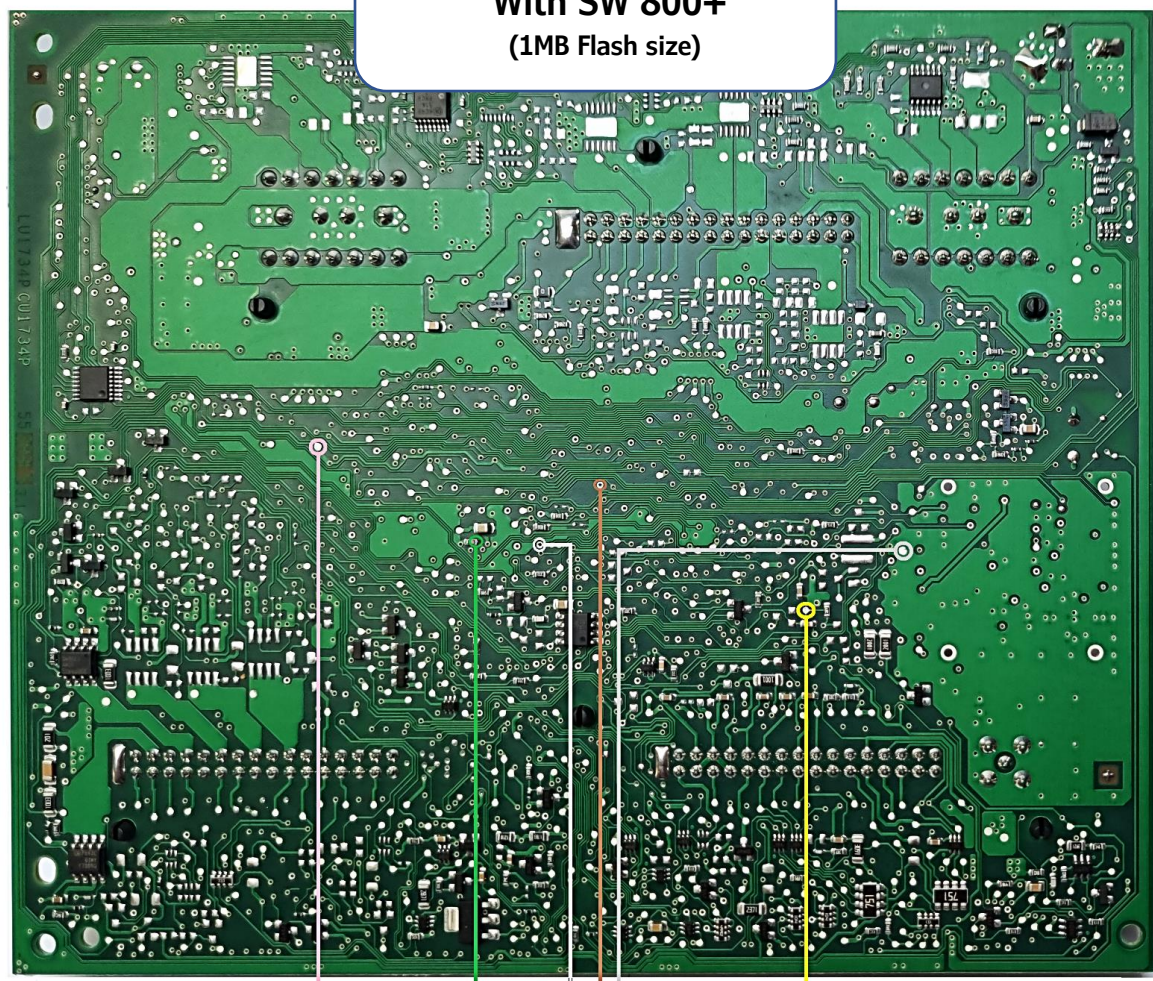
www.keymaster.pl

www.info.autokey.by

WIRES DESCRIPTION

- VCC
- PDX (FLMD0)
- RXD (white)
- TXD
- RST (Reset)
- GND

BCM2 4H0
With SW 800+
(1MB Flash size)



IMPORTANT !!
This diode should be installed ONLY if you bulid the adapter yourself !!!